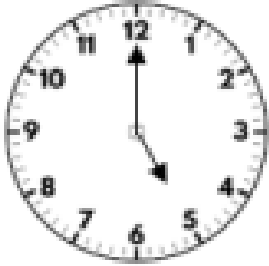
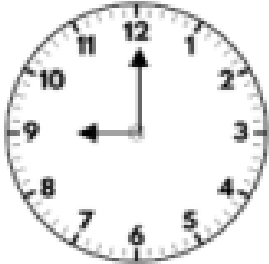


WALT read the time to the hour

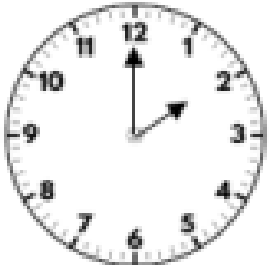
1) Can you match the times to the clocks?



9 o'clock



Two o'clock

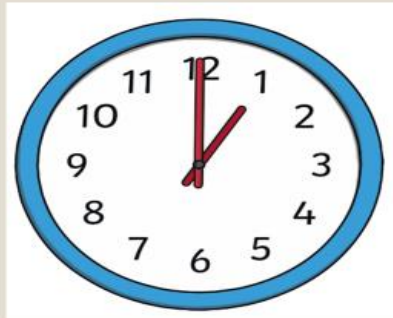


5 o'clock

2) Can you fill in the missing units of time?

Can you name what time comes before and after?

An hour
before



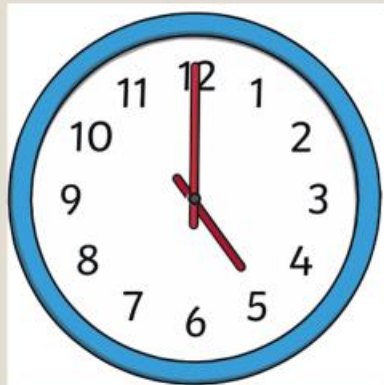
An hour
after

___ o'clock

___ o'clock

___ o'clock

An hour
before



An hour
after

___ o'clock

___ o'clock

___ o'clock

3) Where will the hour hand be at 5 o'clock?

4) Where will the minute hand be at 7 o'clock?

5) Can you spot Amir's mistake?



The time is 3 o'clock.